

INFIMOTION



Wuxi InfiMotion Technology Co., Ltd.

in LinkedIn

<https://www.linkedin.com/company/InfiMotion-technology>

Instagram

<https://instagram.com/InfiMotion>



InfiMotion Website



InfiMotion Wechat



InfiMotion Tiktok

Full-stack Intelligent Mobility Solutions Provider

InfiMotion Technology is a full-value-chain enterprise integrating research, development, manufacturing, and sales, committed to becoming a world-leading intelligent mobility solutions provider.

The company covers the entire chain from underlying software to hardware integration, focusing on core power and electronic solutions for new energy. It provides electric drive, power supply, and electronic products for pure electric and hybrid systems, and has a forward-looking layout in diverse scenarios such as intelligent driving, charging, battery management, and low-altitude flight applications.

From ground to sky, from mobility to computing power, infiMotion Technology always takes customer needs as the starting point, provides global partners with efficient, high-quality intelligent and energy-saving products and services, and uses leading technologies to create a cleaner, smarter future.

GLOBALIZATION

R&D Centers and Manufacturing Bases located worldwide, with a complete service system.
Global team can provide 24h online support

Headquarters/R&D Center/Manufacturing Base: Wuxi

R&D Center/Manufacturing Base: Ningbo, Hangzhou, Jiaxing

R&D Branch: Shanghai, Gothenburg

Manufacturing Base: Quzhou, Malaysia



System Construction

The quality system covers R&D quality, manufacturing quality, quality improvement, supplier management, etc., and implements full-process quality operation management. Our products are favored by customers including GEELY, LYNK & CO, GEOMETRY, VOLVO, SMART, and ZEEKR. It has complete hardware and software quality assurance capabilities, and has passed IATF 16949 quality management system certification, ISO/IEC 17025 CNAS laboratory accreditation, ASPICE Level 2 process certification, ISO 26262 functional safety product certification, and Grade A evaluation of the full-process competitive quality system of GEELY Auto Group.



Intelligent Manufacturing Bases

WPC(AC Charging Platform)

- 7kW Lite Wifi
- 7kW Standard Wifi,LAN,4G
- 11kW Standard Wifi,LAN,4G
- 22kW Standard Wifi,LAN,4G



Air-cooled Super Charging Platform

- 240~480kW Power Cabinet
 - Fast Charging Dispenser 250A
- 600~960kW Power Cabinet
 - Super Charging Dispenser 600A



Liquid-cooled Ultra Charging Platform

- V Series Dispenser 1500kW/1300A Max.
 - 360~480kW Power Cabinet
- G Series Dispenser 600kW/650A Max.
 - 840~960kW Power Cabinet

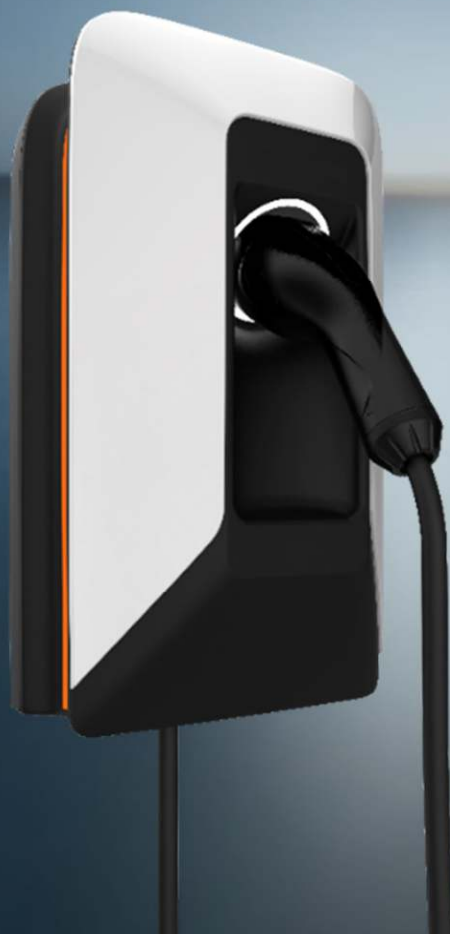


Fast Charging Platform

- FPC Series
 - FPC160 160kW/250A
 - FPC120 120kW/250A
- IPC Series
 - IPC60 60kW/250A
 - IPC80 80kW/250A
 - IPC120 120kW/250A
 - IPC160 160kW/250A
 - FPC240 240kW/250A
 - IPC320 320kW/500A



WPC



WAC01

Compact and Lightweight:

- Small dimension, light weight, easy for transportation and installation.

Multi-scenario Coverage:

- Supports multiple communication methods such as WiFi, 4G, and Ethernet. Supports multiple Authentication modes including RFID, Auto charge, and APP.

Remote O&M:

- Compliant with OCPP 1.6J, integrable with 3rd-party clouds and APPs for remote control and operation & maintenance.

Load Management:

- Equipped with DLB(Dynamic Load Management) function to realize intelligent energy utilization and ensure household electricity safety.



Item	Parameters	Item	Parameters
Product Dimension	220mm(L)*89mm(D)*220mm(H)	Rated Input Current	32A/16A/32A
Weight	≤3.5kg	Rated Power	7kW/11kW/22kW
Housing Color:	Black/White/Gray	Operating Temperature	-30°C~50°C
Installation Method:	Wall-mounted / pedestal	Protection Level	IP55
Charging Cable Length	5m/7.5m (optional)	Relative Humidity	5%~95%
HMI	LED	Altitude	≤2000m
Input Voltage	230/400Vac+15%	Authentication Mode	Plug-and-Charge / RFID / APP
Frequency	50/60Hz	Communication Mode	WiFi/4G/Ethernet

WAC02

Easy Installation:

- Quick-install-and-disassemble "sandwich" structure, saving more than 50% of installation time.

User-friendly:

- Supports RFID and Auto charge, simple operation.

Safety Protection:

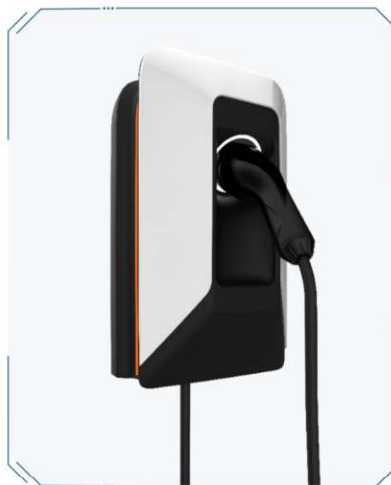
- 10-layer safety protection to safeguard charging safety in real time.

Smart APP:

- Current adjustment, scheduled charging.

Durable & Reliable:

- IP55 high protection level.
- Applicable to 4000m high altitude.



Item	Parameters	Item	Parameters
Product Dimension	251mm(L)*163mm(D)*434mm(H)	Rated Power	7kw/11kW/22kW
Weight	Socket type ≤5kg, Tethered type ≤9kg	Operating Temperature	-30°C-55°C
Installation Method	Wall-mounted / Pedestal	Protection Level	IP55
Charging Cable Length	5m/7m	Relative Humidity	5%~95%
HMI	LED light ring	Altitude	≤4000m
Input Voltage	230/400Vac±15%	Start Mode	Plug-and-Charge / RFID / APP
Frequency	50/60Hz	Communication Mode	Bluetooth
Rated Input Current	32A/16A/32A		

WPC01

Compact and Lightweight:

- Small dimension, light weight, easy for transportation and installation.
- Highly integrated design with compact volume.

Easy Installation:

- Pre-reserved external incoming wire, installable without opening the cover.

User-friendly:

- Supports multiple start/stop modes: card swiping (NFC), plug-and-charge (via Bluetooth), APP remote start.

Safety Protection:

- Multiple protection circuits including input PE detection, output LN short-circuit detection, relay adhesion detection, and connector NTC temperature detection, strictly compliant with latest GB/T standards and 3C certification.



Item	Parameters	Item	Parameters
Product Dimension	181mm*284mm*93mm	Operating Temperature	7kW
Weight	≤3.8kg	Protection Level	-40°C-65°C
Installation Method:	Floor-mounted	Relative Humidity	IP55
Charging Cable Length	5m	Altitude	5%~95%
HMI:	LED light	Authentication Mode	≤4000m
Input Voltage	220Vac±15%	Communication Mode:	Plug'N Charge / Card Swiping, etc.
Frequency	45~55Hz	Rated Input Current	32A

FPC



IPC160

Compatible with over 99.9% of vehicle models in the market, meeting charging demands of overseas markets such as Europe, Southeast Asia, and the Middle East.

Efficiency & Applicability:

- Maximum output power of 160kW, voltage range of 150V to 1000V, suitable for high-power charging operators, fleet operators, trucks and logistics centers.

Intelligent Management:

- Remote monitoring and maintenance.
- Equipped with dynamic load management functions to optimize power grid utilization.

Flexible Upgrade & Expansion:

- Modular design supporting scalable upgrades of multiple power segments.



Item	Parameters	Item	Parameters
Product Dimension	475mm(L)*972mm(D)*2000mm(H)	Rated Power	60/120/160kW
Installation Method	Floor-mounted	Operating Temperature	-30°C-55°C
Charging Cable Length	5m	Protection Level	IP54
HMI	LED, 7-inch screen	Relative Humidity	5%-95%
Input Voltage	400Vac±15%	Noise Level	≤65dB
Frequency	50/60Hz	Communication Mode	3G/4G/Ethernet
Maximum Output Current	250A	Number of Connectors	2
Output Voltage Range	200Vdc~1000Vdc	Cooling Method	Air cooling

IPC320

Intuitive screen interaction + cable management, user-friendly; adaptable to various operation scenarios.

Efficiency & Applicability:

- Maximum output power of 320kW, voltage range of 150V to 1000V, suitable for high-power charging operators, fleet operators, trucks, and logistics centers.

Intelligent Management:

- Remote monitoring and maintenance, equipped with load balancing and dynamic load management functions to optimize power grid utilization.

Flexible Upgrade & Expansion:

- Modular design supporting scalable upgrades of multiple power segments.

Excellent User Experience:

- Intuitive user interface with 15.6-inch display.
- Multilingual operating system.



Item	Parameters	Item	Parameters
Product Dimension	1120mm(D)*550mm(W)*2000mm(H)	Rated Power	240/320kW
Weight	Max730kg	Operating Temperature	-30°C-70°C
Charging Cable Length	3.5m/5m/7m (optional)	Relative Humidity	5%-95%
HMI	15.6"	Noise Level	≤75dB
Input Voltage	400Vac±10%	Communication Mode	4G/3G/Ethernet
Frequency	50/60Hz	Number of Connectors	2
Maximum Output Current	600A	Cooling Method	Air cooling
Output Voltage Rang	150Vdc-1000Vdc		

FPC160

Targeting mainstream market users, providing more stable and reliable charging products for charging stations, and committed to continuously improving the operation efficiency of charging stations.

High Efficiency & Low Noise:

- Peak equipment efficiency reaches 96.5%, no derating at 50°C.Noise lower than 60dB.

Multi-dimensional Safety Protection:

- Complete charging protection functions to prevent vehicle overcharging and protect vehicle batteries; also protects against over-temperature, over-voltage, under-voltage, electric leakage, short circuit, etc.

Intelligent Power Distribution:

- Dual connectors support multiple charging modes, automatically identifying vehicle demands via AI algorithms.



Item	Parameters	Item	Parameters
Product Dimension	680mm(L)*497mm(D)*1650mm(H)	Measurement Accuracy:	Class 2
Weight	≤100kg	Rated Power	80kW/120kW/160kW
Charging Cable Length	5m/7m (optional)	Operating Temperature	-25°C-50°C
HMI	10.1-inch screen	Relative Humidity	5%-95%
Input Voltage	380Vac±15%	Communication Mode:	4G/Ethernet
Input Power Factor	0.99	Start Mode:	Plug'N Charge / APP Mini Program, etc.
Frequency	50±2%Hz	Number of Connectors	2
Maximum Output Current	200A/250A/300A	Cooling Method:	Air cooling
Output Voltage Range	200Vdc-1000Vdc		

GPC



GPC

A super charging platform developed based on the HPC system, open to all charging operators, promoting the industrial application and popularization of super charging technology.

High Power:

- System supports up to 960kW.

High Intelligence:

- Supports intelligent power distribution of up to 8 liquid-cooled or 16 air-cooled terminals per unit.
- Supports multi-interface energy access.

High Compatibility:

- Compliant with national standards for market-oriented operation.
- Liquid-cooled charging cables are optional for an ultimate super charging experience.

High Scalability:

- Modular design supporting rapid power upgrading, dispenser upgrading, etc., enabling fast deployment to meet future ultra-high power charging demands.



Item	Parameters	Item	Parameters
Power Cabinet	960kW:1850(L)*800(D)*1670(H)	Output Voltage Range	250Vdc-1000Vdc
Dimension (mm)	480kW:1000(L)*800(D)*2120(H)	System Power	240kW-960kW
Dispenser	Air-cooled: 594(L)*200(D)*1650(H)	Operating Temperature	-30°C-50°C
Dimension (mm)	Liquid-cooled: 322(L)*322(D)*1650(H)	Relative Humidity	5%-95%
Charging Cable Length	5m/8m (Air-cooled)	Communication Mode	4G/Ethernet
	2.55m/4m (Liquid-cooled)	Start Mode:	Plug'N Charge / APP / Mini Program, etc.
HMI	LED light / screen (optional)	Number of Dispensers:	1 power cabinet with 8 dispensers (max.)
Input Voltage	380Vac±15%	Cooling Method:	Air cooling (Power cabinet) / liquid cooling or air cooling (Dispenser)
Maximum Output Current	800A (liquid-cooled) /300A (air-cooled)		

HPC



HPC-V Series

Ultra-fast Charging Experience:

- Ultra-high terminal output power ease users' range anxiety

Ultra-slim Charging Cable:

- Thin liquid-cooled cable, half the weight of ordinary cables, easy for one-handed operation

Ultra-intelligent Power Distribution:

- Adopts brand-new station-level intelligent power distribution and sharing technology to meet the maximum charging demand of all parking bays.

Ultra-high Charging Compatibility:

- Compatible with voltage platforms of various electric vehicles and charging demands of GB/T and private protocols.

Ultra-low O&M Cost:

- Brand-new architecture and liquid-cooled power components with IP66 protection grade.
- Long service life, unattended and maintenance-free.

Ultra-high Safety Protection:

- Multi-dimensional safety design from electrical safety regulations, software strategies, system architecture, etc., eliminating charging safety concerns.



Item	Parameters	Item	Parameters
Power Cabinet Dimension (mm)	960kW:1850 (L)*800 (D)*2120(H)	Maximum Output Current	1500A
	480kW:1000(L)*800(D)*2120(H)	Output Voltage Range	250Vdc-1000Vdc
Dispenser Dimension (mm)	495(L)*379(D)*1668.5(H)	System Power	240kW-1960kW
Charging Cable Length (m)	2.3	Operating Temperature	-30°C-50°C
HMI	LED light ring	Relative Humidity	5%-95%
Input Voltage	380Vac±15%	Noise Level	Power cabinet ≤65dB Dispenser ≤65dB
Frequency	50±2%Hz	Communication Mode	4G/Ethernet
Number of Dispensers:	1 power cabinet with 8 dispensers (max.)	Start Mode	Plug'NCharge / APP Mini Program, etc.

HPC-G Series

Based on the leading technical capabilities and architecture of V Series, G Series provides flexible configuration of air-cooled and liquid-cooled terminals

High Power:

- Maximum output capacity supports up to 600kW.
- Maximum output current up to 650A (optional).

High Intelligence:

- Supports intelligent power distribution of up to 8 dispensers per power cabinet.
- Supports multi-interface energy access.

High Compatibility:

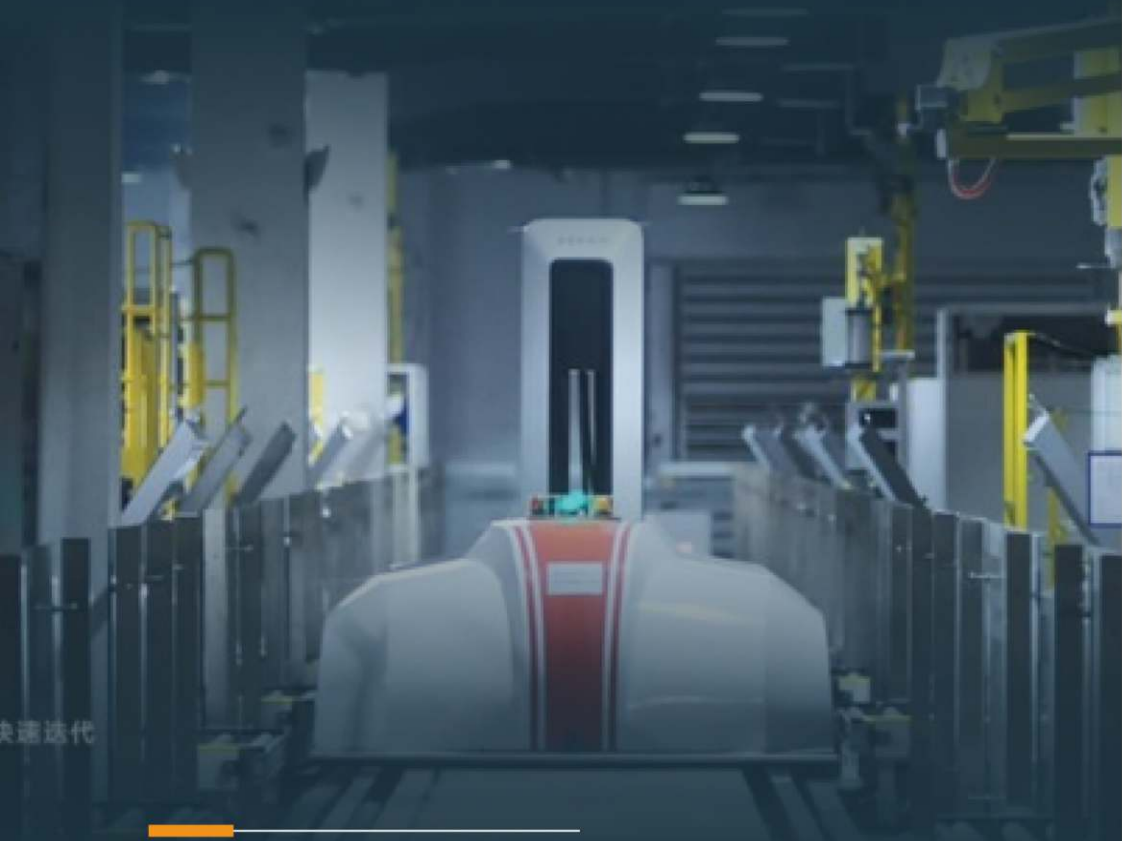
- Compatible with GB/T standard terminal cabinets for market-oriented operation.
- Adopt liquid-cooled dispenser for an ultimate charging experience.

High Scalability:

- Meets future high-power output demands through power expansion, terminal cabinet modification, etc.



Item	Parameters	Item	Parameters
Power Cabinet Dimension (mm)	960kW:1850 (L)*800 (D)*2120(H)	Maximum Output Current	650A
	480kW:1000(L)*800(D)*2120(H)	Output Voltage Range	250Vdc-1000Vdc
Dispenser Dimension (mm)	495 (L)*379(D)*1668.5(H)	System Power	240kW-1960kW
Installation Method:	Floor-mounte	Operating Temperature	-30°C-50°C
Charging Cable Length (m)	2.3 (liquid-cooled) / 5 (air-cooled)	Relative Humidity	5%-95%
HMI	LED	Authentication Mode:	Plug-and-Charge/APP /Mini Program, etc.
Input Voltage	380Vac±15%	Communication Mode:	4G/Ethernet
Frequency	50±2%Hz	Number of Terminals:	1 power cabinet with 8 dispensers (max.)



快速迭代

Intelligent Manufacturing Bases

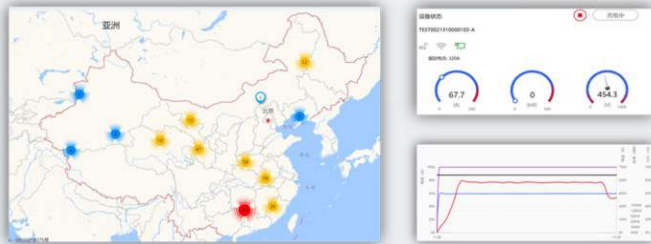
Layout of Intelligent Manufacturing Bases



PLATFORM

Microgrid Energy Management System

The microgrid energy management system integrates charging and energy storage ecological management, combining data visualization maintenance, refined operation management, and Big Data analysis. It performs energy management for charging systems, ESS, PV, wind power systems, etc., realizes station safety early warning, remote O&M, and intelligent operation, and provides conditions for further analysis and processing of energy data.



WEB Interface



Demonstration Screen Interface



Mobile Terminal Interface



管家端 APP/小程序

用户端 APP/小程序

运营及运维端 WEB

Station Search: Find chargers via map.
QR Code Charging: QR code charging via APP, supporting plug-and-charge.
Payment & Invoicing: WeChat payment, fast online invoicing.
Online Customer Service: Online customer service support with timely response to issues.

Pre-sales Support: Provides professional consulting services for charging products & technologies.
Product Inquiry: Provides inquiry services for common configurations and quotations of charging piles.
Commissioning & Station Construction: Meets station construction demands, providing on-site intelligent commissioning and station construction services.

Data Monitoring: Equipment operation monitoring, charging order records.
Intelligent O&M: One-click self-inspection, intelligent patrol inspection.
Operation Support: Charging behavior analysis, dynamic strategy adjustment.
Interconnection: Products flexibly adapt to 3rd-party operator platforms.



WEB端

移动端

Station Monitoring
 Supports multi-scenarios of wind-solar-ESS-charging. Realizes full-equipment monitoring of stations. 24*7 protection.

Intelligent O&M
 Second-level notification of alarms/faults, timely handling of potential safety hazards. One-click equipment self-inspection, intelligent station patrol inspection.

Operation Support
 User charging behavior analysis. Equipment utilization analysis. Dynamic strategy adjustment.

Interconnection
 Products flexibly adapt to third-party operator platforms.

MICRO +

The microgrid charging system solution is a miniature internal power grid that integrates 380V power grid, clean energy power supply systems such as wind and PV, ESS, V2G-enabled charging equipment, lighting systems, security systems, IoT systems, and charging energy management service platforms. With rich product lines and diverse energy storage types, it meets multi-scenario comprehensive energy ecological demands of power generation side, grid side, and user side.

Microgrid charging system solution



Leading Power Sharing Technology >

Wide Application: Meets charging demands of products with different power levels simultaneously.

Intelligent Distribution: Realizes intelligent power distribution to ensure efficient utilization of electric energy.



" wind-solar-ESS-charging " Comprehensive Energy Ecological Demonstration Station

END-TO-END SERVICE

The microgrid charging system solution is a miniature internal power grid that integrates 380V power grid, clean energy power supply systems such as wind and PV, ESS V2G-enabled charging equipment, lighting systems, security systems, IoT systems, and charging energy management service platforms. With rich product lines and diverse energy storage types, it meets multi-scenario comprehensive energy ecological demands of power generation side, grid side, and user side.

Microgrid Charging System Solution >

End-to-end Solution for Electric Vehicle Charging Facilities



- Full-link:** Provides one-stop closed-loop solutions from site survey to operation analysis, installation and training, etc.
- Convenient & Efficient:** Industry-leading charging facilities and online management system to further reduce operation costs and improve station operation efficiency.
- Customization:** Provides customized charging solutions for customers in different scenarios such as charging operators, highways, and households.
- Service Scope:** Seven major regions including East China, Central China, South China, North China, Northwest China, Southwest China, and Northeast China.
- Service Capability:** National charging pile engineering and infrastructure construction service, over 1,000 super charging stations completed so far.
- Intelligent Management:** To further strengthen the installation and commissioning management services of charging stations and realize intelligent information follow-up and management, unified order management and monitoring can be carried out through the installation and commissioning service platform.

After-sales Service

1. Professional maintenance of AC and DC charging stations, and relocation services for home charging stations.
2. Free maintenance of charging products and installation services within the warranty period.
3. 7*24 hours online customer service, after-sales service covering the whole China. (400-024-0064)
4. Combination of regular online inspection and offline inspection.

CASES



Juguang Center HPC V4 Charging Station



Ningbo Nanyuan Universal
Hotel HPC V3 Charging Station



Geely Research Institute Wind-PV-
ESS-Charging Demonstration Station



VRMET Electric Wind- PV-ESS -
Charging Demonstration Station



Xingyao Center HPC V2 Charging Station



Quzhou Citizen Football Stadium GPC
Charging Station



Quzhou Jidian PV-ESS-Charging
Demonstration Station (V2G)



Hangzhou Jidian Storage-Charging
Demonstration Station

CASES



Munich, Germany



Poland



Bulgaria



Dubai, United Arab Emirates

Customer



Testing and Certification Body



SUPPLY CHAIN



Complete supply
Chain System
With global suppliers

3 5 0 +

Professional
Supplier sourcing
Delivery time can be
effectively improved

2 0 %

Extreme cost
Accounting & control
Effective cost
reduction of approx

2 5 %

ESG



> 20000MWH
photovoltaic power generation

100%
The manufacturing base is obtained ISO14001 environmental management system certification

0
Manufacturing plant wastewater discharge



0
Accident

100%
Employee training coverage

100%
The manufacturing base is obtained ISO45001 Occupational Health and Safety Management System certification.

100%
The manufacturing base is obtained IATF 16949 Automotive Quality Management System Certification

0
Harm

100%
Customer satisfaction



902.564 h
Total hours of management and staff participation in business ethics and compliance training

17.3577 person-time
Total number of management and staff participating in business ethics and compliance training

> 99%
Employee "Compliance Declaration" signing rate

> 90%
Supplier "Supplier Code of Conduct" signing rate

> 90%
Supplier 'Business Partner Integrity Compliance Statement' Signing Rate

